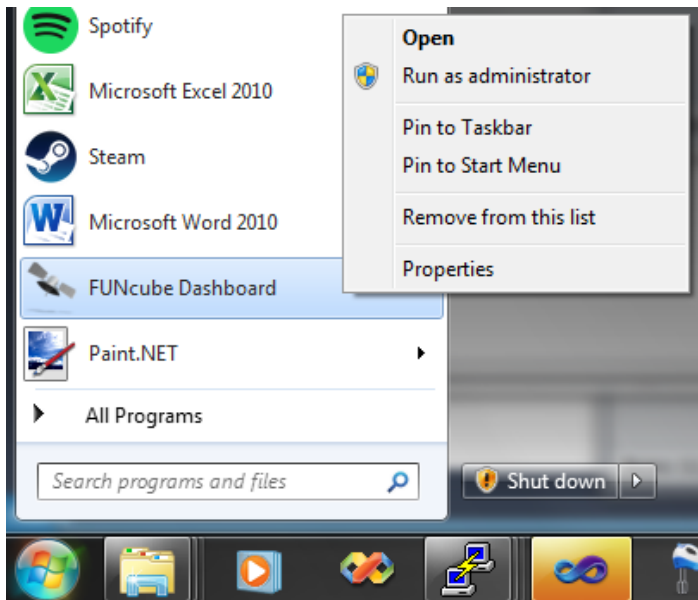


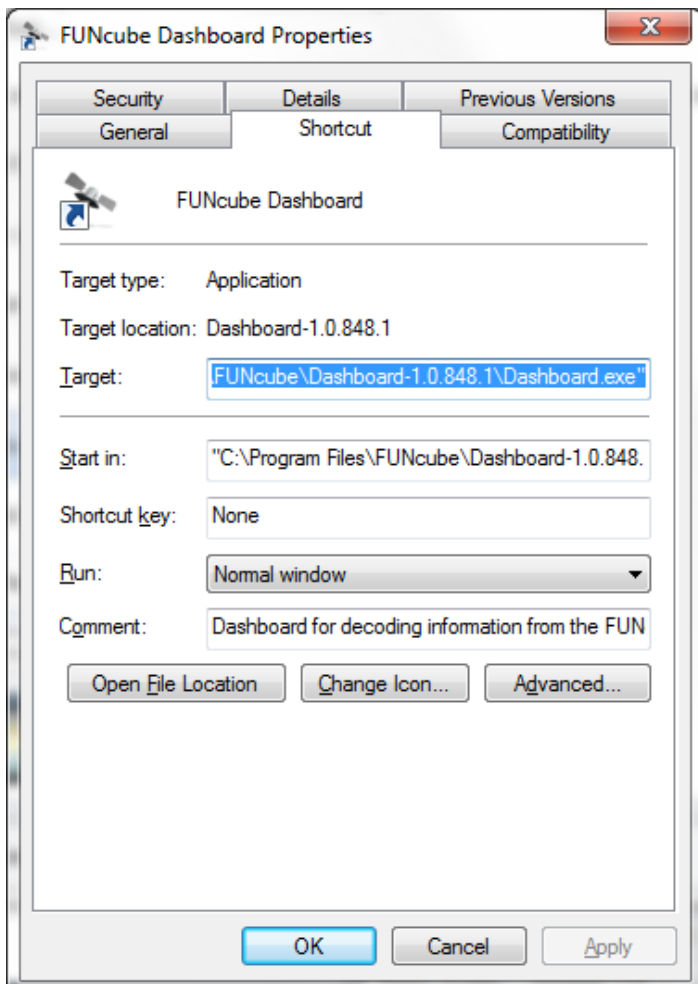
## FUNCube Dashboard auto-start options

The simplest way to use the command line options is to edit the properties of the Dashboard shortcut... these are the steps on a win7 machine, but Win 10 works in a similar manner.

First find and right click the Dashboard Shortcut (works with the Nayif one too) click "Properties" on the menu



You should get something like:



The Target section is where you can add the options, make sure you add them outside the existing quotes i.e.

My original target is:

```
"C:\Program Files\FUNCube\Dashboard-1.0.848.1\Dashboard.exe"
```

Change to:

```
"C:\Program Files\FUNCube\Dashboard-1.0.848.1\Dashboard.exe" /autostart /source=dongle
```

Like this:

Target location: Dashboard-1.0.848.1

Target:

---

Then just "OK" it.

Now clicking the shortcut will auto-start the dashboard decoding from a dongle...